



 Upbring[®]

2025 IMPACT REPORT



Advancing Child Wellbeing, Together.

When I reflect on last year,
I come back to a simple truth:
child wellbeing changes everything.

It changes a child's future.
It changes a family's trajectory.
It changes a community's strength.

**Because of you, that change is
happening across Texas.**

You make our work possible.

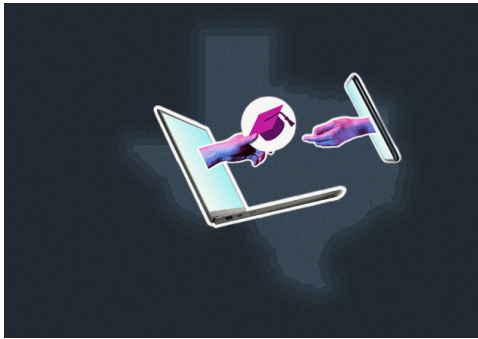
Last year began with recognition. In March, the Texas House honored Upbring, [acknowledging our child wellbeing staff as akin to first responders](#). I see that commitment every day in our teams. You make their work possible.

**Momentum is building with
your continued support.**

That same month at [SVC@SXSW 2025](#), child wellbeing took center stage in a space known for bold ideas and innovation. It was a clear signal: this movement is growing. More leaders are ready to engage.

For more than two decades, you have supported flexible pathways for students navigating foster care, residential treatment and other life disruptions.

- Momentum translated into policy. [Texas Senate Bill 569 expanded access to virtual and hybrid education across the state](#) – strengthening Reclaim Academy's virtual model and allowing 34 students to earn their diplomas — 34 futures reclaimed.
- Leaning into prevention, we launched [Child Wellbeing Zones](#) in Austin and Dallas with an audacious goal: end child removals in participating zip codes within five years. In Dallas, community leaders stepped into the Cost of Poverty Experience to better understand the barriers families face.
- [Mayor Kirk Watson proclaimed Aug. 7, 2025](#), as Child Wellbeing Zone Day, recognizing Upbring's role in making Austin the best place in the country for kids.
- Your support of our **Innovation Lab** and the expansion of **VectorPoint®** into **Head Start preschools** allowed us to pair compassion with real-time data to strengthen outcomes across the full continuum of care.
- The year also marked a decade of **Upbring Head Start Preschools**, now a statewide foundation helping families build stability early and intentionally.





We are grateful to all who participated in our galas, golf tournament, and special events, further fueling our mission and strengthening our shared commitment to children.

For our **Back to School Drive**, you generously provided 200 backpacks filled with school supplies for children in foster care and our Child Wellbeing Zones, 45 classroom supply boxes for Head Start classrooms and 200 teacher care kits.

During **Hope in Motion Holiday Season**, 24 churches, 12 businesses and countless partners brought joy and belonging to thousands of children by fulfilling their gift wish lists.

Through your support of our BeREAL program, you helped provide vital resources to youth aging out of foster care and made it possible to expand into Houston, equipping more young adults with stability, skills and lasting support.

You reflect a shared belief: child wellbeing transforms communities. Thank you for advancing child wellbeing. Thank you for believing that prevention is possible, healing is real and systems can change.

With appreciation,



Michael Loo

Michael Loo
President & Chief Executive Officer



Mission

Break the cycle of child abuse by empowering children, families and communities.

Vision

Guided by faith, education and action, communities will be free of abuse.

What We Do

Upbring advances child wellbeing through innovative prevention programs and trauma-informed care that help children heal, grow and thrive. Guided by measurable outcomes, Upbring drives scalable solutions and cross-sector collaborations to stabilize families and strengthen communities across Texas.



Transforming Lives: The Power of Your Generosity

Each child who enters an Upbring program carries a story of resilience and hope—a story made possible by your unwavering support. From infants to young adults, your generosity creates opportunities for brighter futures, breaking cycles of abuse, neglect and instability.



Scan the QR code below to view our Honor Roll of Donors and see the incredible community making a difference in the lives of children and families.

Your support helps us promote child wellbeing and create brighter futures.



**Thank you
for being a
part of our
mission!**



Gwen's Journey from Foster Mom to Advocate

Sixteen years ago, Gwen Lemley and her husband said yes to fostering a newborn named Eve, who was born with a severe congenital heart defect and needed immediate surgery to survive. Determined to bring her home, they learned complex medical care, from feeding tube support to monitoring oxygen levels. Over the years, Eve endured

multiple surgeries and extended hospital stays, but Gwen's commitment never wavered.

Today, Eve is a 14-year-old surrounded by love and dedicated care, and Gwen now serves as Director of Upbring's Primary Medical Needs (PMN) program through Foster in Texas. Upbring is one of the few organizations in Texas licensed to place children with Primary Medical Needs in loving, medically trained foster homes — equipping families across the state to care for some of the most medically fragile children with confidence and compassion.

"Eve has shown me what it means to keep fighting, to find joy in small things and to never lose hope," Gwen says.

[Watch Gwen's Journey](#)



Ashleigh's Full-Circle Journey at New Life

Ten years after arriving at Upbring New Life Children's Center as a teenager in foster care, Ashleigh Phelps returned with a new perspective on the place that helped shape her future. When she first came to New Life at 15, she was navigating trauma, loss

and uncertainty about what lay ahead. Through consistent support, education and trauma-informed care, she rebuilt confidence and began to imagine a different path.

Today, Ashleigh is an emergency room nurse pursuing her goal of becoming a psychiatric nurse practitioner, using her experience to help others heal. Her story reflects the lasting impact of compassionate care and the power of believing in a future beyond trauma.

"I didn't imagine that I'd ever make it out," Ashleigh says. "Now I know they truly cared."

[Watch Ashleigh's Journey](#)



Minerva's Path to Independence Through BeREAL

After years in foster care, Minerva Raymond entered adulthood determined to build a different future. At 18, she joined Upbring's **BeREAL** program, which provides housing, case

management and support for young adults exiting care. With a safe place to live and encouragement from mentors and volunteers, Minerva began to regain a sense of stability and control over her life.

Today, she is a freshman at the University of Houston-Downtown studying to become a clinical psychologist while working to support herself. Surrounded by a community that believes in her, Minerva is building the independence and confidence she once feared she would never have.

"BeREAL made it possible for me to have a home and a future," Minerva says.

[Watch Minerva's Journey](#)

Sources of Funding



- **37%** Contributions
\$2.5M
- **45%** Donated Goods & Services
\$3.0M
- **12%** Grants & Bequests
\$0.8M
- **6%** Events
\$0.4M



- **89%** Children's Services
\$123.2M
- **9%** Administration
\$12.4M
- **2%** Community Services
& Innovation Initiatives
\$2.9M



- **89%** Fees & Grants
from the Government
\$129.1M
- **5%** Fundraising
\$6.7M
- **6%** Program Service Fees,
Investments & Other Income
\$9.2M

The financial data covers Upbring's 2025 calendar year, January 1, 2025 to December 31, 2025.

Financial Reports

Assets	2024	2025
Cash and current assets	\$9.0M	\$10.7M
Noncurrent and other assets	\$74.4M	\$84.2M
Total Assets	\$83.4M	\$94.8M

Liabilities and Net Assets	2024	2025
Current liabilities	\$7.8M	\$11.0M
Long-term liabilities	\$12.2M	\$14.0M
Total liabilities	\$19.9M	\$25.0M
Net assets	\$63.4M	\$69.8M
Total Liabilities and Net Assets	\$83.4M	\$94.8M

The financial data covers Upbring's 2025 calendar year, January 1, 2025 to December 31, 2025.

Board of Directors

Brett Carleton
Chair | Sugar Land, Texas

Jason Paul**
Austin, Texas

Roxanne (Roxy) M. Riefkohl, PhD
Vice Chair | Houston, Texas

Rev. Allyson Pryor**
San Antonio, Texas

Mary Beth Gaertner, PhD
Secretary | Magnolia, Texas

Allison K. Mull*
North Richland Hills, Texas

Beth W. Bruce
Houston, Texas

Erin M. Espinosa, PhD*
Austin, Texas

Scot Thomas
McKinney, Texas

Joel Bode*
Magnolia, Texas

Tori Wilmot
Houston, Texas

*Service began April 2026
**Service ended August 2025

Executive Leadership

Michael Loo
President & Chief Executive Officer

Krystale Bezio
Chief Operating Officer

Andrew Benscoter
Chief Knowledge Officer

Chad Seveland
Chief Financial Officer

Carolyn Paganoni
Chief People & Culture Officer

Mara Holguin Fouts
Chief Brand & Development Officer

Murray Chanow
Senior Vice President of Public Affairs

Karen Tan
Senior Vice President of Community Engagement

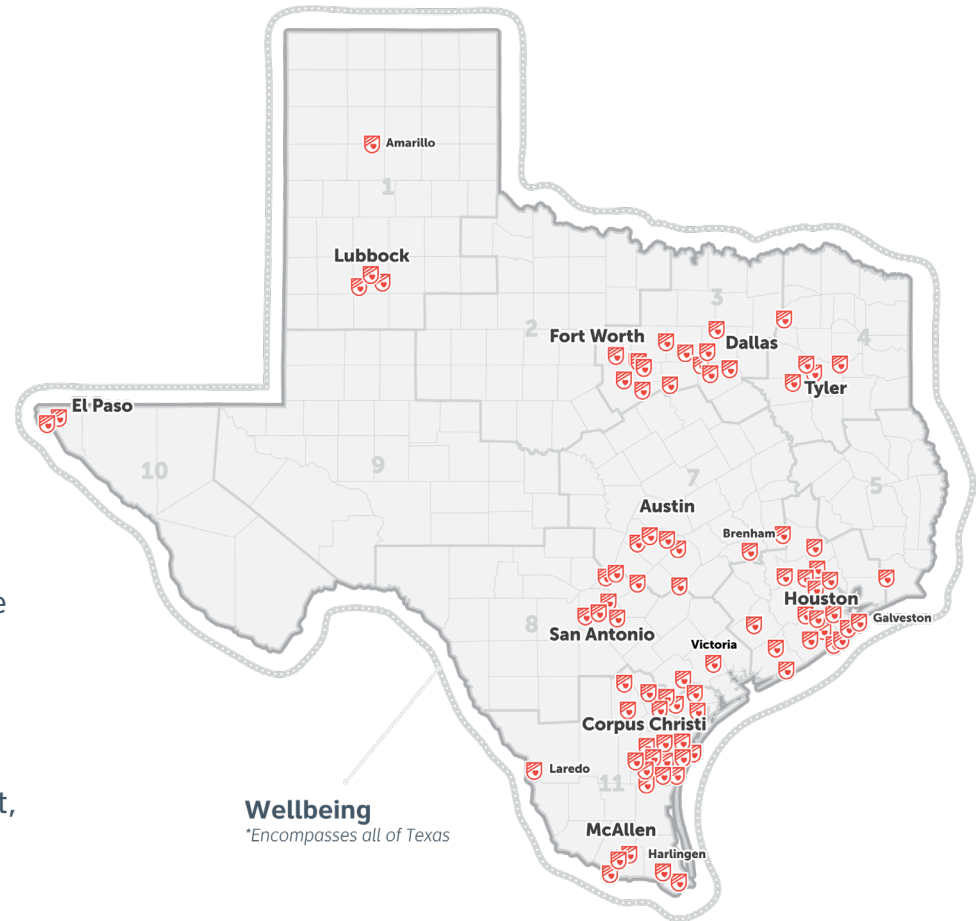
Kyle Kerrigan
Director of Evolution & Innovation



100+

PROGRAM LOCATIONS
ACROSS TEXAS

For over 150 years, Upbring has walked alongside children and families in their hardest moments. In the last decade alone, you have helped us serve more than 100,000 children. Today, across 100 locations, you help nearly 10,000 children and families each year find safety, healing and a path forward through foster care, adoption, education, residential treatment, supervised independent living and innovative prevention programs to end child abuse and neglect.



Learn More [Upbring.org](https://www.upbring.org)

 [/upbringorg](https://www.facebook.com/upbringorg)

 [@upbringorg](https://twitter.com/upbringorg)

 [@upbringorg](https://www.instagram.com/upbringorg)

8305 Cross Park Drive
Austin, TX 78754

512-459-1000

800-938-5777